

(E)-4-Amino-N-(1,2-dihydropyridin-2-ylidene)benzenesulfonamide nitromethane monosolvate

Mostafa M. Ghorab,^a Mansour S. Al-Said,^a Hazem A. Ghabbour,^b Suchada Chantrapromma^{c‡} and Hoong-Kun Fun^{d*§}

^aMedicinal, Aromatic and Poisonous Plants Research Center (MAPPRC), College of Pharmacy, King Saud University, PO Box 2457, Riyadh 11451, Saudi Arabia,

^bDepartment of Pharmaceutical Chemistry, College of Pharmacy, King Saud University, PO Box 2457, Riyadh 11451, Saudi Arabia, ^cCrystal Materials Research Unit, Department of Chemistry, Faculty of Science, Prince of Songkla University, Hat-Yai, Songkhla 90112, Thailand, and ^dX-ray Crystallography Unit, School of Physics, Universiti Sains Malaysia, 11800 USM, Penang, Malaysia

Correspondence e-mail: hkfun@usm.my

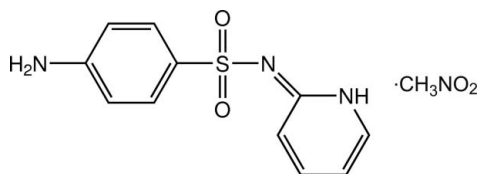
Received 27 February 2012; accepted 6 March 2012

Key indicators: single-crystal X-ray study; *T* = 296 K; mean $\sigma(C-C)$ = 0.003 Å; *R* factor = 0.045; *wR* factor = 0.144; data-to-parameter ratio = 14.3.

In the title solvate, C₁₁H₁₁N₃O₂S·CH₃NO₂, the dihedral angle between the benzene ring and the N-containing ring is 85.94 (11)°, and an approximate V shape arises for the sulfonamide molecule. In the crystal, N—H···O and N—H···N hydrogen bonds and weak C—H···O interactions link the sulfonamide molecules into a three-dimensional network. The nitromethane solvent molecules are located in the interstitial sites in the sulfonamide network.

Related literature

For background to the applications of sulfonamide compounds, see: Ghorab *et al.* (2009);



Experimental

Crystal data

C₁₁H₁₁N₃O₂S·CH₃NO₂ *a* = 10.5179 (3) Å
M_r = 310.34 *b* = 12.4857 (3) Å
 Orthorhombic, *Pbca* *c* = 22.7237 (6) Å

‡ Thomson Reuters ResearcherID: A-5085-2009.

§ College of Pharmacy (Visiting Professor), King Saud University, PO Box 2457, Riyadh 11451, Saudi Arabia. Thomson Reuters ResearcherID: A-3561-2009.

V = 2984.15 (14) Å³
Z = 8
 Cu *K*α radiation

μ = 2.14 mm⁻¹
T = 296 K
 0.54 × 0.43 × 0.31 mm

Data collection

Bruker SMART APEXII CCD diffractometer
 Absorption correction: multi-scan (*SADABS*; Bruker, 2009)
T_{min} = 0.392, *T_{max}* = 0.554

14569 measured reflections
 2799 independent reflections
 2386 reflections with *I* > 2σ(*I*)
R_{int} = 0.062

Refinement

R[*F*² > 2σ(*F*²)] = 0.045
wR(*F*²) = 0.144
S = 1.07
 2799 reflections
 196 parameters

H atoms treated by a mixture of independent and constrained refinement
 $\Delta\rho_{\max}$ = 0.25 e Å⁻³
 $\Delta\rho_{\min}$ = -0.42 e Å⁻³

Table 1

Hydrogen-bond geometry (Å, °).

<i>D</i> —H··· <i>A</i>	<i>D</i> —H	H··· <i>A</i>	<i>D</i> ··· <i>A</i>	<i>D</i> —H··· <i>A</i>
N2—H1N2···O2 ⁱ	0.87	2.10	2.971 (3)	174
N2—H2N2···O1 ⁱⁱ	0.87	2.34	3.162 (3)	157
N3—H1N3···N1 ⁱⁱⁱ	0.86 (2)	2.09 (2)	2.948 (2)	178 (2)
C8—H8A···O1 ⁱⁱⁱ	0.93	2.52	3.160 (3)	126

Symmetry codes: (i) $-x, y - \frac{1}{2}, -z + \frac{1}{2}$; (ii) $-x - \frac{1}{2}, y - \frac{1}{2}, z$; (iii) $-x, -y + 1, -z$.

Data collection: *APEX2* (Bruker, 2009); cell refinement: *SAINT* (Bruker, 2009); data reduction: *SAINT*; program(s) used to solve structure: *SHELXTL* (Sheldrick, 2008); program(s) used to refine structure: *SHELXTL*; molecular graphics: *SHELXTL*; software used to prepare material for publication: *SHELXTL* and *PLATON* (Spek, 2009).

The authors are grateful for the sponsorship of the Research Center, College of Pharmacy and the Deanship of Scientific Research, King Saud University, Riyadh, Saudi Arabia. HKF and SC thank Universiti Sains Malaysia for the Research University Grant No. 1001/PFIZIK/811160. HKF also thanks the King Saud University, Riyadh, Saudi Arabia, for the award of a visiting Professorship (December 23rd 2011 to January 14th 2012).

Supplementary data and figures for this paper are available from the IUCr electronic archives (Reference: HB6660).

References

Bruker (2009). *APEX2*, *SAINT* and *SADABS*. Bruker AXS Inc., Madison, Wisconsin, USA.
 Ghorab, M. M., Ragab, F. A., Alqasoumi, S. I., Alafeefy, A. M. & Aboulmaged, S. A. (2009). *Eur. J. Med. Chem.* **45**, 171–178.
 Sheldrick, G. M. (2008). *Acta Cryst.* **A64**, 112–122.
 Spek, A. L. (2009). *Acta Cryst.* **D65**, 148–155.

supplementary materials

Acta Cryst. (2012). E68, o1030 [doi:10.1107/S1600536812009865]

(E)-4-Amino-N-(1,2-dihydropyridin-2-ylidene)benzenesulfonamide nitromethane monosolvate

Mostafa M. Ghorab, Mansour S. Al-Said, Hazem A. Ghabbour, Suchada Chantrapromma and Hoong-Kun Fun

Comment

As part of our ongoing studies of sulfonamides with potential biological activities (Ghorab *et al.* (2009), the present investigation deals with the synthesis of the title compound, (I), (Fig. 1) a sulfonamide bearing a pyridine moiety to be evaluated as anticancer agent.

The environment of S atom is distorted tetrahedral geometry [angles around S atom are 104.49 (9) - 115.82 (10)°] with two O atoms, one N atom of the amide group and one C atom of the benzene ring. The dihedral angle between the benzene ring and the N atom-containing ring is 85.94 (11)°. The amino group is co-planar with its bound benzene ring with r.m.s. 0.0126 (2) Å for the seven non H atoms (C1–C6/N2).

In the crystal (Fig. 2), the molecules of sulfonamide derivative are linked by N—H···O and N—H···N hydrogen bonds and weak C···H···O interactions (Table 1) into a three dimensional network. The nitromethane solvent molecules are located in the interstitial sites of the sulfonamide network.

Experimental

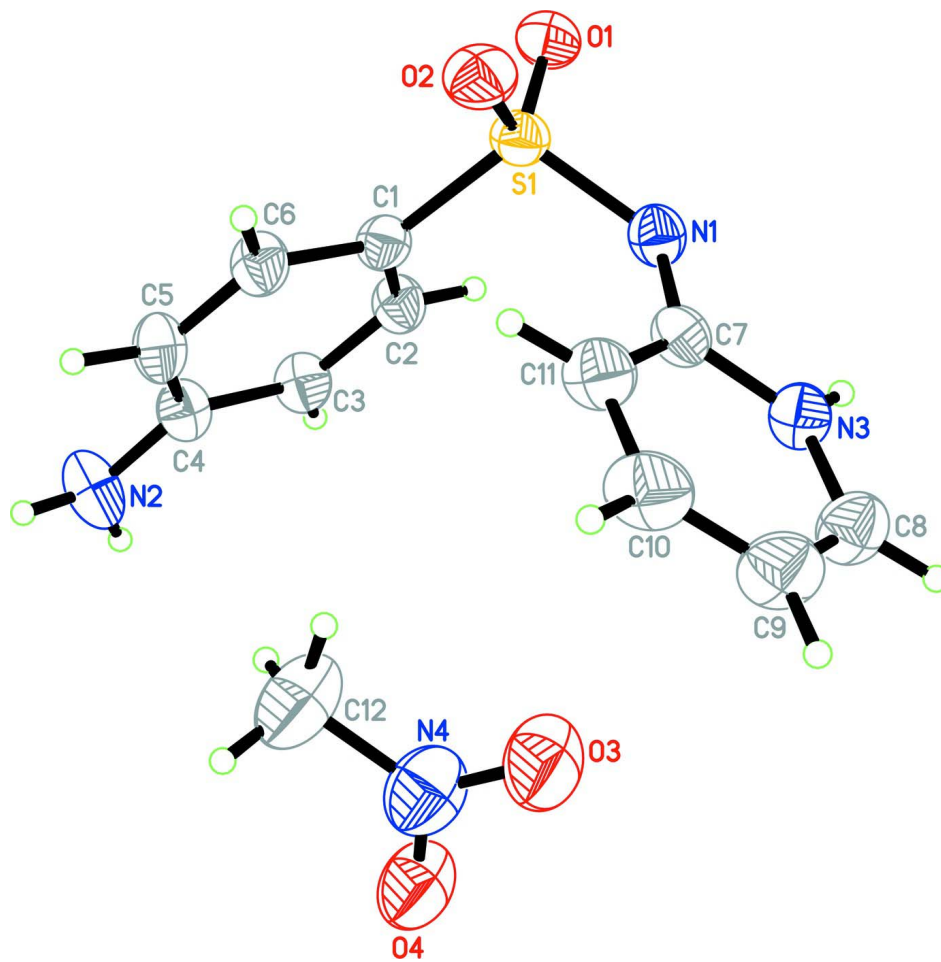
A mixture of (*E*)-3-(dimethylamino)-1-(thiophen-2-yl)prop-2-en-1-one (1.81 g, 0.01 mole) and sulfapyridine (2.49 g, 0.01 mole) in absolute ethanol (30 ml) was heated under reflux for 12 hr. The reaction mixture was filtered and pink blocks of (I) were obtained by the slow evaporation of an ethanol/nitromethane (3:1) solution at room temperature.

Refinement

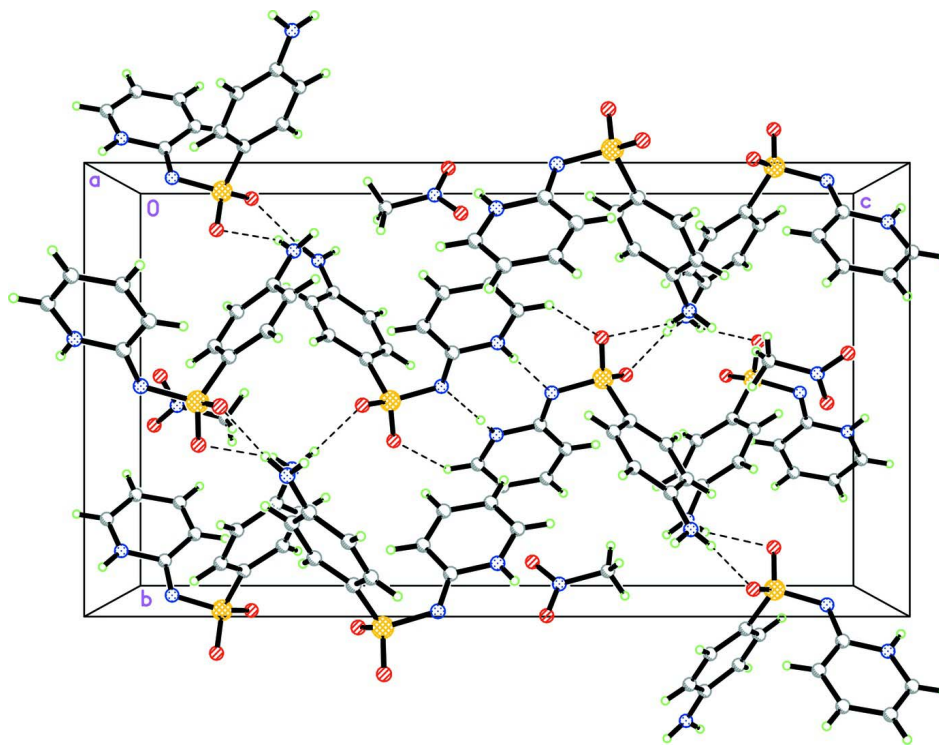
Amide H atom was located in a difference map and refined isotropically. The remaining H atoms were placed in calculated positions with $d(\text{N-H}) = 0.87$ Å, $d(\text{C-H}) = 0.93$ for aromatic, and 0.96 Å for CH₃ atoms. The U_{iso} values were constrained to be $1.5U_{\text{eq}}$ of the carrier atom for methyl H atoms and $1.2U_{\text{eq}}$ for the remaining H atoms. A rotating group model was used for the methyl groups.

Computing details

Data collection: *APEX2* (Bruker, 2009); cell refinement: *SAINT* (Bruker, 2009); data reduction: *SAINT* (Bruker, 2009); program(s) used to solve structure: *SHELXTL* (Sheldrick, 2008); program(s) used to refine structure: *SHELXTL* (Sheldrick, 2008); molecular graphics: *SHELXTL* (Sheldrick, 2008); software used to prepare material for publication: *SHELXTL* (Sheldrick, 2008) and *PLATON* (Spek, 2009).

**Figure 1**

The structure of (I), showing 30% probability displacement ellipsoids.


Figure 2

The crystal packing of (I) viewed along the *a* axis, showing three dimensional network.

(*E*)-4-Amino-*N*-(1,2-dihydropyridin-2-ylidene)benzenesulfonamide nitromethane monosolvate

Crystal data

$C_{11}H_{11}N_3O_2S \cdot CH_3NO_2$

$M_r = 310.34$

Orthorhombic, *Pbca*

Hall symbol: -P 2ac 2ab

$a = 10.5179 (3) \text{ \AA}$

$b = 12.4857 (3) \text{ \AA}$

$c = 22.7237 (6) \text{ \AA}$

$V = 2984.15 (14) \text{ \AA}^3$

$Z = 8$

$F(000) = 1296$

$D_x = 1.381 \text{ Mg m}^{-3}$

Cu *K* α radiation, $\lambda = 1.54178 \text{ \AA}$

Cell parameters from 2799 reflections

$\theta = 5.7\text{--}71.6^\circ$

$\mu = 2.14 \text{ mm}^{-1}$

$T = 296 \text{ K}$

Block, pink

$0.54 \times 0.43 \times 0.31 \text{ mm}$

Data collection

Bruker SMART APEXII CCD
diffractometer

Radiation source: fine-focus sealed tube

Graphite monochromator

φ and ω scans

Absorption correction: multi-scan

(*SADABS*; Bruker, 2009)

$T_{\min} = 0.392$, $T_{\max} = 0.554$

14569 measured reflections

2799 independent reflections

2386 reflections with $I > 2\sigma(I)$

$R_{\text{int}} = 0.062$

$\theta_{\max} = 71.6^\circ$, $\theta_{\min} = 5.7^\circ$

$h = -11 \rightarrow 10$

$k = -15 \rightarrow 15$

$l = -27 \rightarrow 27$

Refinement

Refinement on F^2

Least-squares matrix: full

$R[F^2 > 2\sigma(F^2)] = 0.045$

$wR(F^2) = 0.144$

$S = 1.07$

2799 reflections

196 parameters

0 restraints

Primary atom site location: structure-invariant
direct methods

Secondary atom site location: difference Fourier
map

Hydrogen site location: inferred from
neighbouring sites

H atoms treated by a mixture of independent
and constrained refinement

$w = 1/[\sigma^2(F_o^2) + (0.0843P)^2 + 0.5181P]$

where $P = (F_o^2 + 2F_c^2)/3$

$(\Delta/\sigma)_{\max} = 0.001$

$\Delta\rho_{\max} = 0.25 \text{ e } \text{Å}^{-3}$

$\Delta\rho_{\min} = -0.42 \text{ e } \text{Å}^{-3}$

Extinction correction: *SHELXTL* (Sheldrick,
2008), $F_c^* = kF_c[1 + 0.001xF_c^2\lambda^3/\sin(2\theta)]^{-1/4}$

Extinction coefficient: 0.0022 (3)

Special details

Geometry. All esds (except the esd in the dihedral angle between two l.s. planes) are estimated using the full covariance matrix. The cell esds are taken into account individually in the estimation of esds in distances, angles and torsion angles; correlations between esds in cell parameters are only used when they are defined by crystal symmetry. An approximate (isotropic) treatment of cell esds is used for estimating esds involving l.s. planes.

Refinement. Refinement of F^2 against ALL reflections. The weighted R-factor wR and goodness of fit S are based on F^2 , conventional R-factors R are based on F , with F set to zero for negative F^2 . The threshold expression of $F^2 > 2\sigma(F^2)$ is used only for calculating R-factors(gt) etc. and is not relevant to the choice of reflections for refinement. R-factors based on F^2 are statistically about twice as large as those based on F , and R-factors based on ALL data will be even larger.

Fractional atomic coordinates and isotropic or equivalent isotropic displacement parameters (Å^2)

	<i>x</i>	<i>y</i>	<i>z</i>	$U_{\text{iso}}^*/U_{\text{eq}}$
S1	0.03202 (5)	0.52678 (4)	0.13912 (2)	0.0537 (2)
O1	-0.04470 (16)	0.62229 (11)	0.13586 (7)	0.0664 (4)
O2	0.14832 (16)	0.53613 (12)	0.17203 (7)	0.0696 (4)
N1	0.05275 (16)	0.49231 (13)	0.07212 (8)	0.0549 (4)
N2	-0.27661 (19)	0.18108 (17)	0.24298 (10)	0.0806 (6)
H1N2	-0.2408	0.1417	0.2699	0.097*
H2N2	-0.3364	0.1534	0.2213	0.097*
N3	0.13565 (17)	0.39072 (14)	-0.00078 (8)	0.0587 (4)
H1N3	0.082 (2)	0.4266 (17)	-0.0216 (10)	0.054 (6)*
C1	-0.05963 (18)	0.42658 (14)	0.17206 (8)	0.0499 (4)
C2	-0.1786 (2)	0.40208 (16)	0.14851 (9)	0.0547 (5)
H2A	-0.2093	0.4405	0.1165	0.066*
C3	-0.2504 (2)	0.32171 (17)	0.17237 (9)	0.0576 (5)
H3A	-0.3299	0.3063	0.1565	0.069*
C4	-0.20549 (19)	0.26212 (16)	0.22053 (9)	0.0567 (5)
C5	-0.0891 (2)	0.29027 (18)	0.24482 (9)	0.0628 (5)
H5A	-0.0599	0.2542	0.2780	0.075*
C6	-0.0163 (2)	0.37042 (17)	0.22084 (9)	0.0576 (5)
H6A	0.0623	0.3871	0.2373	0.069*
C7	0.13465 (18)	0.41433 (15)	0.05728 (9)	0.0530 (4)
C8	0.2136 (2)	0.3168 (2)	-0.02582 (12)	0.0741 (6)
H8A	0.2104	0.3049	-0.0662	0.089*
C9	0.2955 (3)	0.2609 (2)	0.00786 (14)	0.0855 (8)
H9A	0.3498	0.2106	-0.0088	0.103*

C10	0.2968 (3)	0.2799 (2)	0.06752 (14)	0.0857 (8)
H10A	0.3523	0.2413	0.0913	0.103*
C11	0.2185 (2)	0.35419 (18)	0.09265 (11)	0.0708 (6)
H11A	0.2205	0.3651	0.1331	0.085*
O3	0.0798 (3)	0.0856 (2)	0.04675 (11)	0.1239 (9)
O4	-0.0699 (2)	-0.0317 (2)	0.06434 (11)	0.1120 (8)
N4	0.0045 (3)	0.0378 (3)	0.08153 (15)	0.1093 (9)
C12	0.0102 (4)	0.0684 (4)	0.14512 (17)	0.1265 (14)
H12A	-0.0722	0.0921	0.1578	0.190*
H12B	0.0706	0.1253	0.1503	0.190*
H12C	0.0358	0.0076	0.1681	0.190*

Atomic displacement parameters (\AA^2)

	U^{11}	U^{22}	U^{33}	U^{12}	U^{13}	U^{23}
S1	0.0566 (4)	0.0492 (3)	0.0551 (3)	-0.00291 (18)	-0.00473 (19)	-0.00030 (17)
O1	0.0793 (11)	0.0487 (8)	0.0712 (10)	0.0061 (7)	0.0029 (7)	0.0001 (6)
O2	0.0653 (10)	0.0710 (9)	0.0724 (10)	-0.0133 (7)	-0.0152 (8)	-0.0063 (7)
N1	0.0541 (9)	0.0559 (8)	0.0546 (9)	0.0045 (7)	-0.0008 (7)	0.0066 (7)
N2	0.0624 (12)	0.0869 (13)	0.0923 (15)	-0.0077 (10)	-0.0068 (10)	0.0371 (11)
N3	0.0544 (10)	0.0631 (9)	0.0587 (10)	0.0083 (8)	-0.0006 (8)	0.0047 (8)
C1	0.0513 (10)	0.0518 (9)	0.0464 (9)	0.0002 (8)	-0.0059 (7)	-0.0004 (7)
C2	0.0549 (11)	0.0588 (10)	0.0505 (10)	0.0017 (8)	-0.0082 (8)	0.0071 (8)
C3	0.0479 (10)	0.0659 (11)	0.0589 (11)	-0.0003 (8)	-0.0077 (8)	0.0038 (9)
C4	0.0494 (10)	0.0626 (10)	0.0580 (11)	0.0039 (9)	0.0040 (8)	0.0082 (8)
C5	0.0618 (13)	0.0740 (12)	0.0525 (10)	0.0043 (10)	-0.0075 (9)	0.0153 (9)
C6	0.0546 (11)	0.0663 (11)	0.0518 (11)	-0.0017 (9)	-0.0110 (8)	0.0050 (8)
C7	0.0476 (10)	0.0520 (9)	0.0595 (11)	-0.0021 (8)	-0.0016 (8)	0.0072 (8)
C8	0.0688 (14)	0.0791 (14)	0.0744 (14)	0.0156 (12)	0.0052 (11)	-0.0043 (11)
C9	0.0784 (17)	0.0795 (15)	0.0985 (19)	0.0293 (14)	0.0006 (14)	-0.0035 (14)
C10	0.0832 (17)	0.0737 (14)	0.100 (2)	0.0258 (13)	-0.0213 (15)	0.0060 (13)
C11	0.0739 (15)	0.0672 (12)	0.0712 (14)	0.0110 (11)	-0.0150 (11)	0.0046 (10)
O3	0.1205 (18)	0.148 (2)	0.1029 (17)	-0.0638 (17)	0.0212 (14)	-0.0115 (15)
O4	0.0996 (15)	0.141 (2)	0.0955 (15)	-0.0502 (15)	0.0236 (13)	-0.0211 (13)
N4	0.0867 (17)	0.139 (2)	0.103 (2)	-0.0042 (17)	0.0109 (16)	-0.0112 (17)
C12	0.122 (3)	0.169 (4)	0.089 (2)	-0.013 (3)	0.004 (2)	-0.033 (2)

Geometric parameters (\AA , $^\circ$)

S1—O2	1.4384 (16)	C5—C6	1.373 (3)
S1—O1	1.4418 (15)	C5—H5A	0.9300
S1—N1	1.5971 (18)	C6—H6A	0.9300
S1—C1	1.7477 (19)	C7—C11	1.410 (3)
N1—C7	1.343 (3)	C8—C9	1.347 (4)
N2—C4	1.358 (3)	C8—H8A	0.9300
N2—H1N2	0.8700	C9—C10	1.377 (4)
N2—H2N2	0.8699	C9—H9A	0.9300
N3—C7	1.352 (3)	C10—C11	1.365 (4)
N3—C8	1.359 (3)	C10—H10A	0.9300
N3—H1N3	0.86 (2)	C11—H11A	0.9300

C1—C6	1.389 (3)	O3—N4	1.268 (4)
C1—C2	1.395 (3)	O4—N4	1.232 (4)
C2—C3	1.368 (3)	N4—C12	1.496 (5)
C2—H2A	0.9300	C12—H12A	0.9600
C3—C4	1.405 (3)	C12—H12B	0.9600
C3—H3A	0.9300	C12—H12C	0.9600
C4—C5	1.388 (3)		
O2—S1—O1	115.82 (10)	C5—C6—C1	120.10 (19)
O2—S1—N1	113.66 (10)	C5—C6—H6A	119.9
O1—S1—N1	104.49 (9)	C1—C6—H6A	119.9
O2—S1—C1	107.73 (10)	N1—C7—N3	114.09 (17)
O1—S1—C1	107.78 (9)	N1—C7—C11	130.1 (2)
N1—S1—C1	106.90 (9)	N3—C7—C11	115.81 (19)
C7—N1—S1	121.49 (14)	C9—C8—N3	120.0 (2)
C4—N2—H1N2	116.5	C9—C8—H8A	120.0
C4—N2—H2N2	118.8	N3—C8—H8A	120.0
H1N2—N2—H2N2	119.1	C8—C9—C10	118.4 (2)
C7—N3—C8	124.15 (19)	C8—C9—H9A	120.8
C7—N3—H1N3	114.7 (15)	C10—C9—H9A	120.8
C8—N3—H1N3	121.1 (16)	C11—C10—C9	121.5 (2)
C6—C1—C2	119.35 (18)	C11—C10—H10A	119.2
C6—C1—S1	121.47 (15)	C9—C10—H10A	119.2
C2—C1—S1	119.17 (15)	C10—C11—C7	120.0 (2)
C3—C2—C1	120.26 (18)	C10—C11—H11A	120.0
C3—C2—H2A	119.9	C7—C11—H11A	120.0
C1—C2—H2A	119.9	O4—N4—O3	122.0 (3)
C2—C3—C4	120.77 (19)	O4—N4—C12	120.8 (3)
C2—C3—H3A	119.6	O3—N4—C12	117.2 (3)
C4—C3—H3A	119.6	N4—C12—H12A	109.5
N2—C4—C5	121.67 (19)	N4—C12—H12B	109.5
N2—C4—C3	120.14 (19)	H12A—C12—H12B	109.5
C5—C4—C3	118.18 (19)	N4—C12—H12C	109.5
C6—C5—C4	121.24 (18)	H12A—C12—H12C	109.5
C6—C5—H5A	119.4	H12B—C12—H12C	109.5
C4—C5—H5A	119.4		
O2—S1—N1—C7	43.60 (19)	C3—C4—C5—C6	-3.3 (3)
O1—S1—N1—C7	170.79 (16)	C4—C5—C6—C1	1.3 (3)
C1—S1—N1—C7	-75.12 (17)	C2—C1—C6—C5	1.2 (3)
O2—S1—C1—C6	-0.9 (2)	S1—C1—C6—C5	-178.33 (17)
O1—S1—C1—C6	-126.50 (18)	S1—N1—C7—N3	176.39 (14)
N1—S1—C1—C6	121.65 (17)	S1—N1—C7—C11	-3.6 (3)
O2—S1—C1—C2	179.59 (16)	C8—N3—C7—N1	178.0 (2)
O1—S1—C1—C2	53.96 (18)	C8—N3—C7—C11	-2.0 (3)
N1—S1—C1—C2	-57.89 (18)	C7—N3—C8—C9	0.8 (4)
C6—C1—C2—C3	-1.6 (3)	N3—C8—C9—C10	0.6 (4)
S1—C1—C2—C3	177.94 (16)	C8—C9—C10—C11	-0.6 (5)
C1—C2—C3—C4	-0.5 (3)	C9—C10—C11—C7	-0.7 (4)

C2—C3—C4—N2	-178.6 (2)	N1—C7—C11—C10	-178.1 (2)
C2—C3—C4—C5	2.9 (3)	N3—C7—C11—C10	1.9 (3)
N2—C4—C5—C6	178.2 (2)		

Hydrogen-bond geometry (Å, °)

<i>D</i> —H... <i>A</i>	<i>D</i> —H	H... <i>A</i>	<i>D</i> ... <i>A</i>	<i>D</i> —H... <i>A</i>
N2—H1N2...O2 ⁱ	0.87	2.10	2.971 (3)	174
N2—H2N2...O1 ⁱⁱ	0.87	2.34	3.162 (3)	157
N3—H1N3...N1 ⁱⁱⁱ	0.86 (2)	2.09 (2)	2.948 (2)	178 (2)
C8—H8A...O1 ⁱⁱⁱ	0.93	2.52	3.160 (3)	126

Symmetry codes: (i) $-x, y-1/2, -z+1/2$; (ii) $-x-1/2, y-1/2, z$; (iii) $-x, -y+1, -z$.